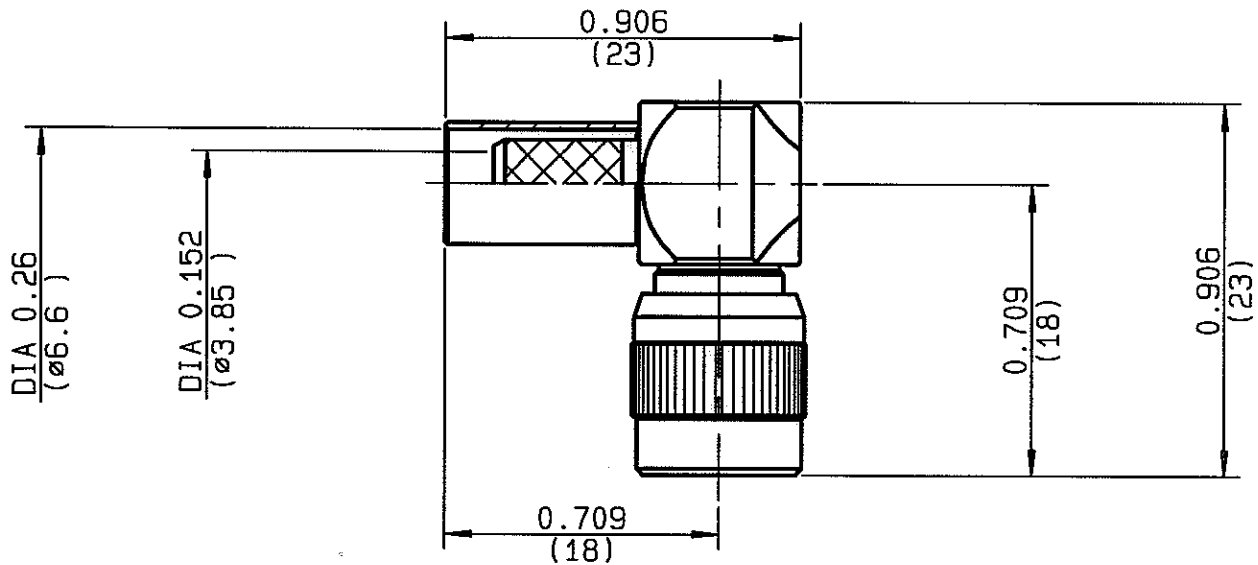


**RIGHT ANGLE PLUG, CRIMP TYPE
CABLE 6/75 S**

R129.184.000
SERIES DIN V1.6-5.6



NOMINAL IMPEDANCE	75 Ω	CABLES : KX 6A
FREQUENCY RANGE	0-1 GHz	RS 59
TEMPERATURE RATING	-40/+155 °C	
V.S.W.R	NA + x F(GHz)Maxi	
RF INSERTION LOSS	NA \sqrt{F} (GHz) dB Maxi	
VOLTAGE RATING	330 Veff Maxi	
DIELECTRIC WITHSTANDING VOLTAGE	1500 Veff Mini	
INSULATION RESISTANCE	10000 M Ω Mini	OTHERS CHARACTERISTICS
HERMETIC SEAL	NA Atm.cm ³ /s	CABLE RETENTION
LEAKAGE (pressurized only)	NA	270 N Mini
MECHANICAL DURABILITY	500 Cycles	CENTER CONTACT RETENTION
WEIGHT	gr	Axial force - mating end
SPECIFICATION		27 N Mini
		Axial force - opposite end
		NA N Mini
		Torque
		NA cm.N Mini
		RECOMMENDED TORQUES
		Mating
		NA cm.N
		Panel nut
		NA cm.N
		Clamp nut
		NA cm.N

CONNECTOR PARTS	MATERIALS	FINISH	(all values are given in micrometers)
BODY	BRASS	NICKEL 2	
OUTER CONTACT	BRASS	GOLD 1.3 OVER NICKEL 2	
CENTER CONTACT	BRASS	GOLD 1.3 OVER NICKEL 2	
INSULATOR	PTFE	-	
GASKET		-	
OTHERS PIECES			

ISSUE 9803H01
 CREATION DATE 03-AUG-90
 FILE PART-NUMBER



The information given here is subject to change without notice. Design changes may be in order to improve the product.

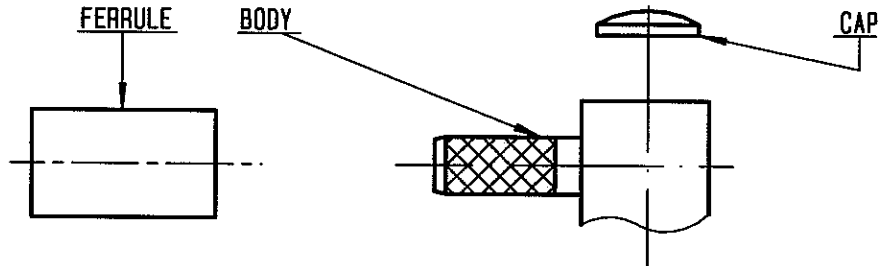
Connect to the future



RADIALL®

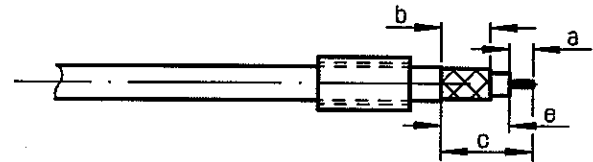
R129.184.000

ISSUE 9803H01 SERIES
DIN V1.6-5.6



①

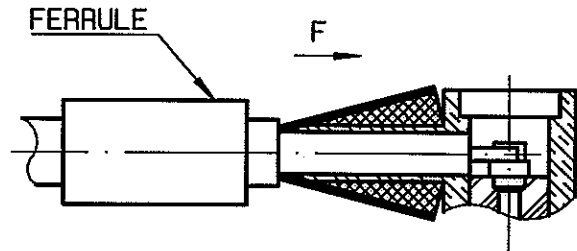
Slide ferrule onto cable .
Strip the cable .



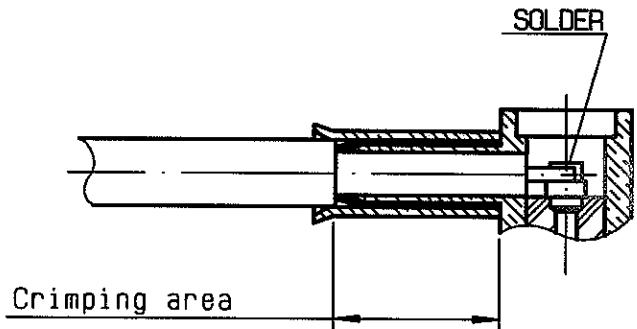
Stripping	a	b	c	d	e
inch	0.157	0.354	0.591	0	0.433
mm	4	9	15		11

②

Fan the braid .
Push connector body under the braid .
Slide ferrule over braid
(in direction F)

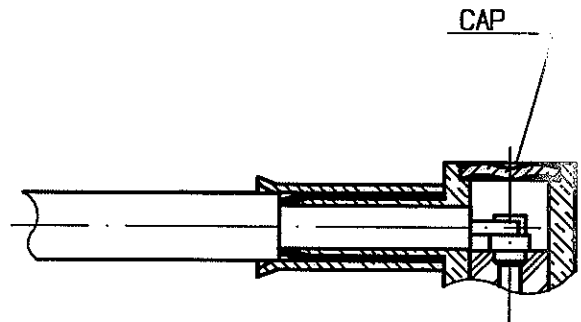


Crimp the ferrule with crimping tool
R282 223 000 (Hex. : 6.48) or
crimping tool R 282 293 000 (M22520/5-01)
+ dies R 282 235 013 (M22520/5-13)
Solder inner conductor .



④

Place the cap into body.



MULLER